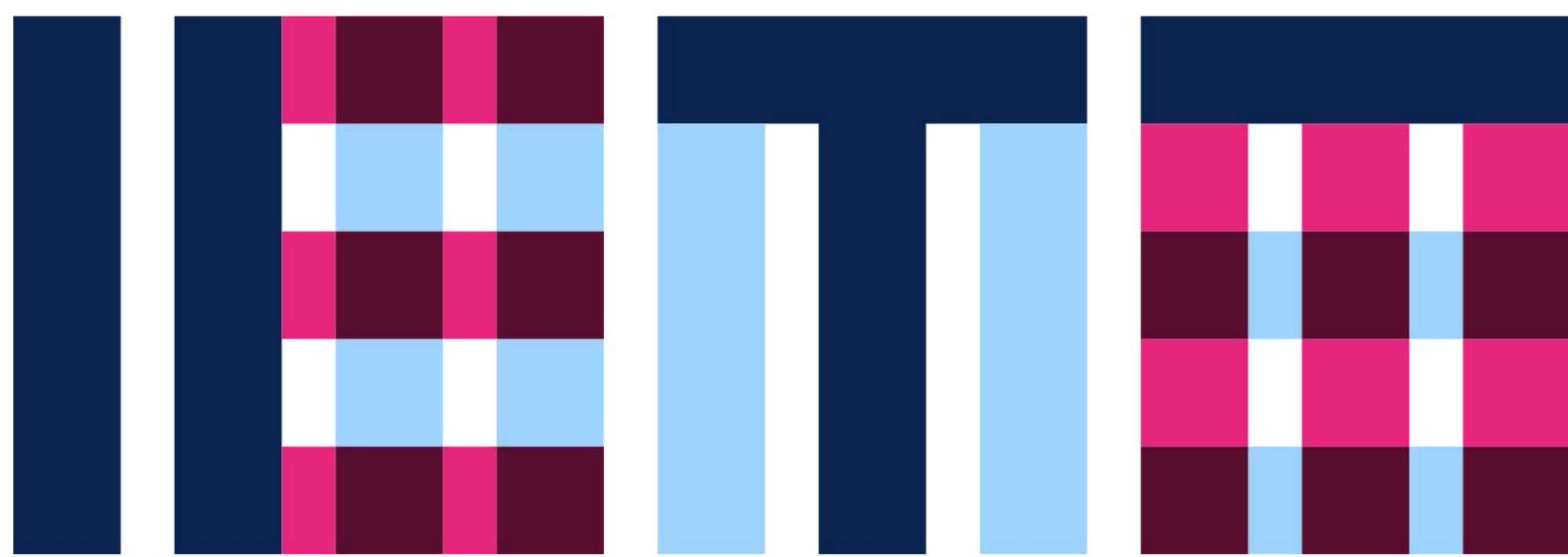


# IETM Oulu Plenary Meeting 2026

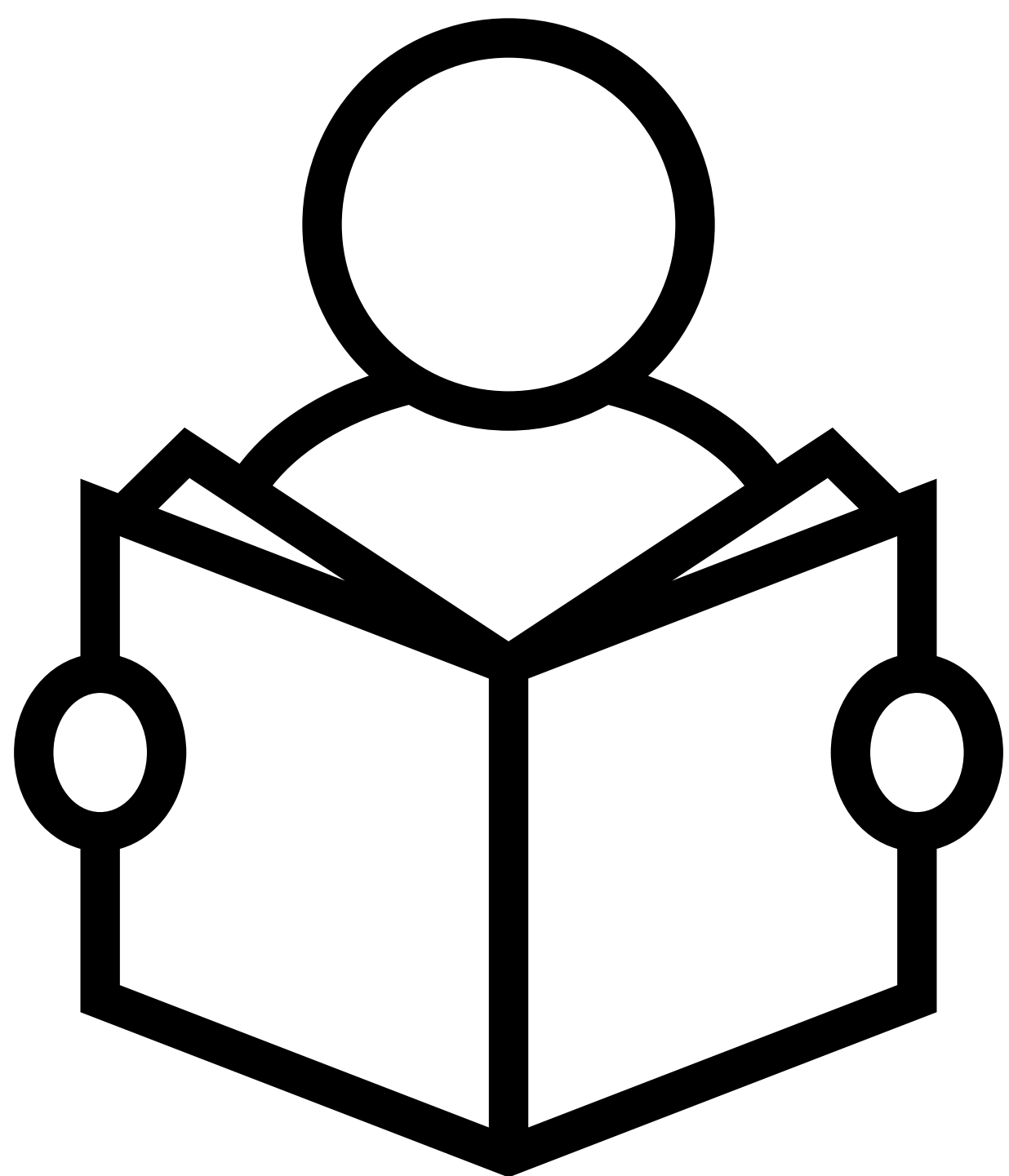
Official Easy Read Guide

**A collaboration between:**



# IETM Oulu Plenary Meeting 2026

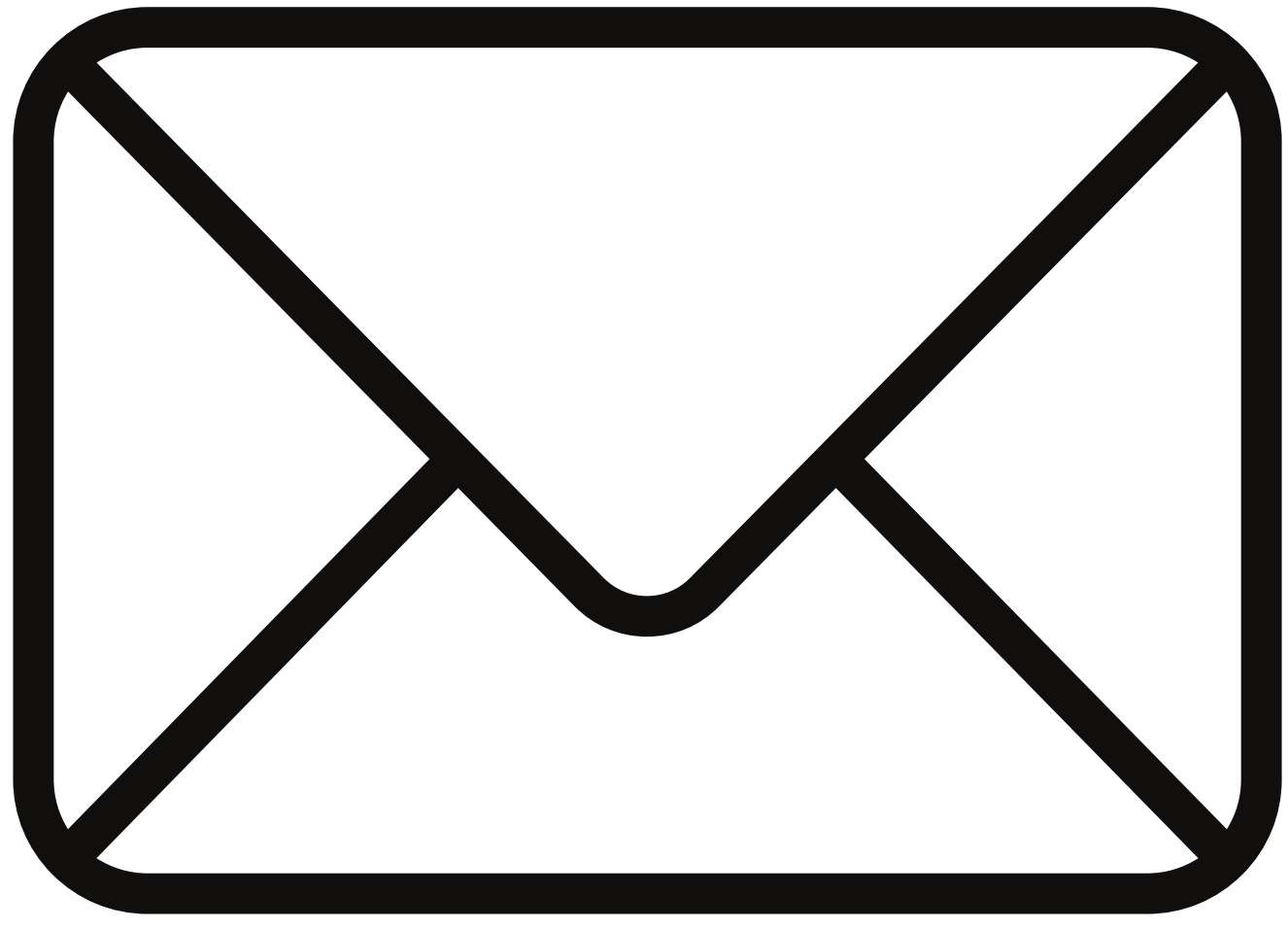
## Official Easy Read Guide



This guide is 14 pages long.

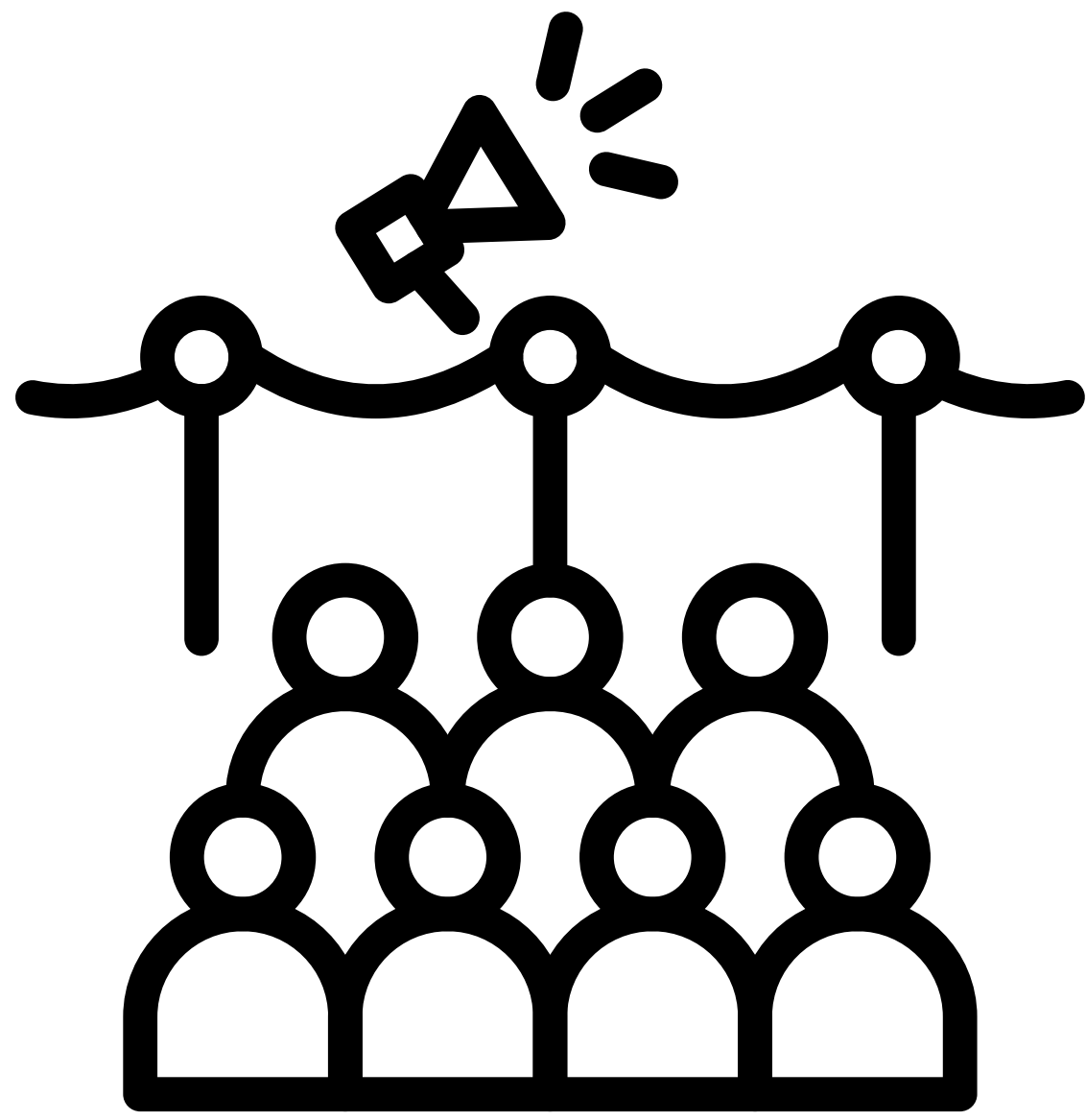


This Easy Read Guide is a condensed version of everything you can find on our **dedicated web page**.

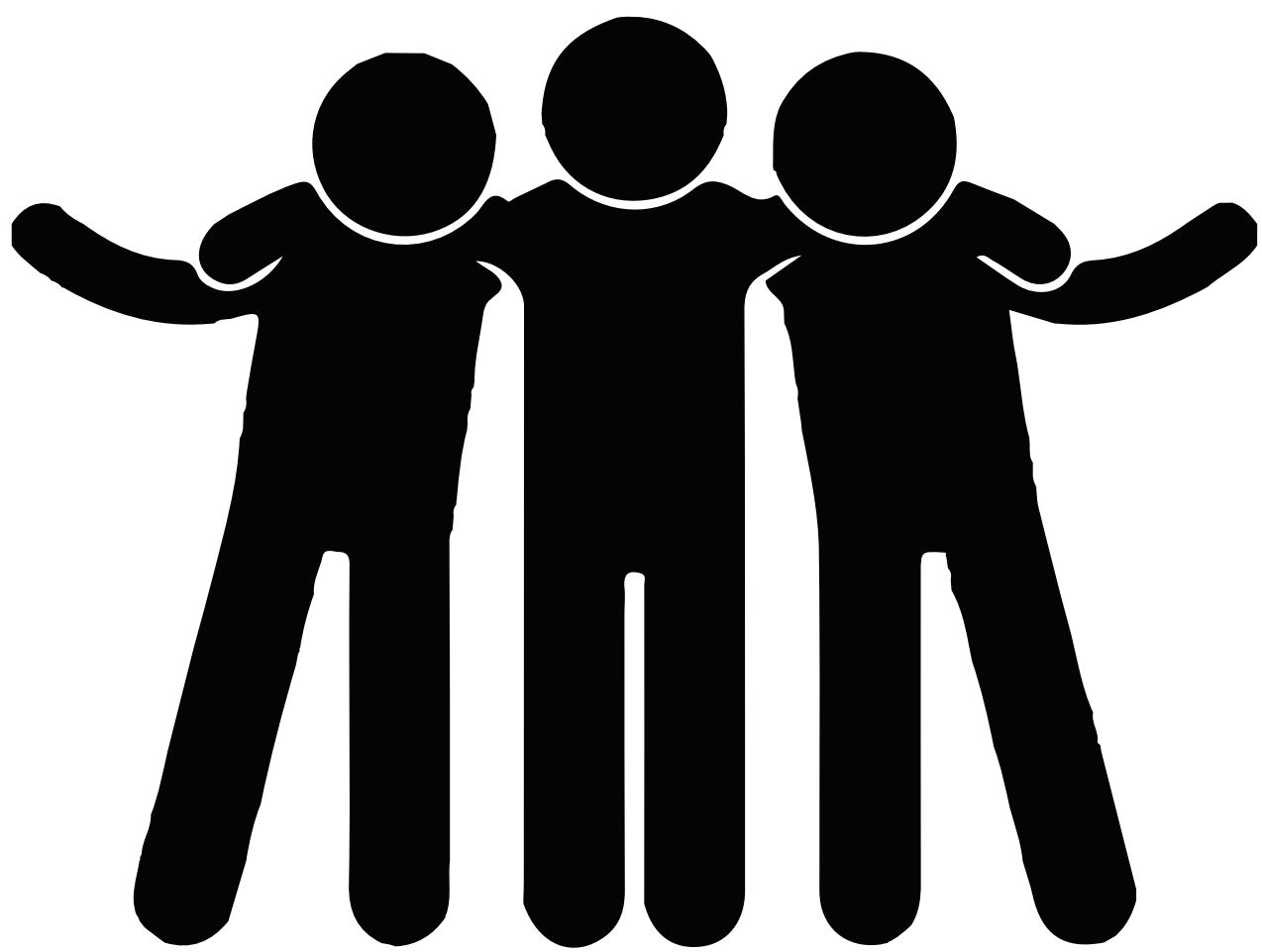


If you have any questions, you  
can email us at  
**[registration@ietm.org](mailto:registration@ietm.org)**.

# What is the IETM Oulu Plenary Meeting?



The IETM Oulu Plenary Meeting is a **four day meeting**. It is our **biggest event of the year**.



We expect there will be around **250** people at the meeting.



There will be lots to do at the meeting, such as **workshops, panel discussions, walks, artistic performances, networking opportunities** and more.

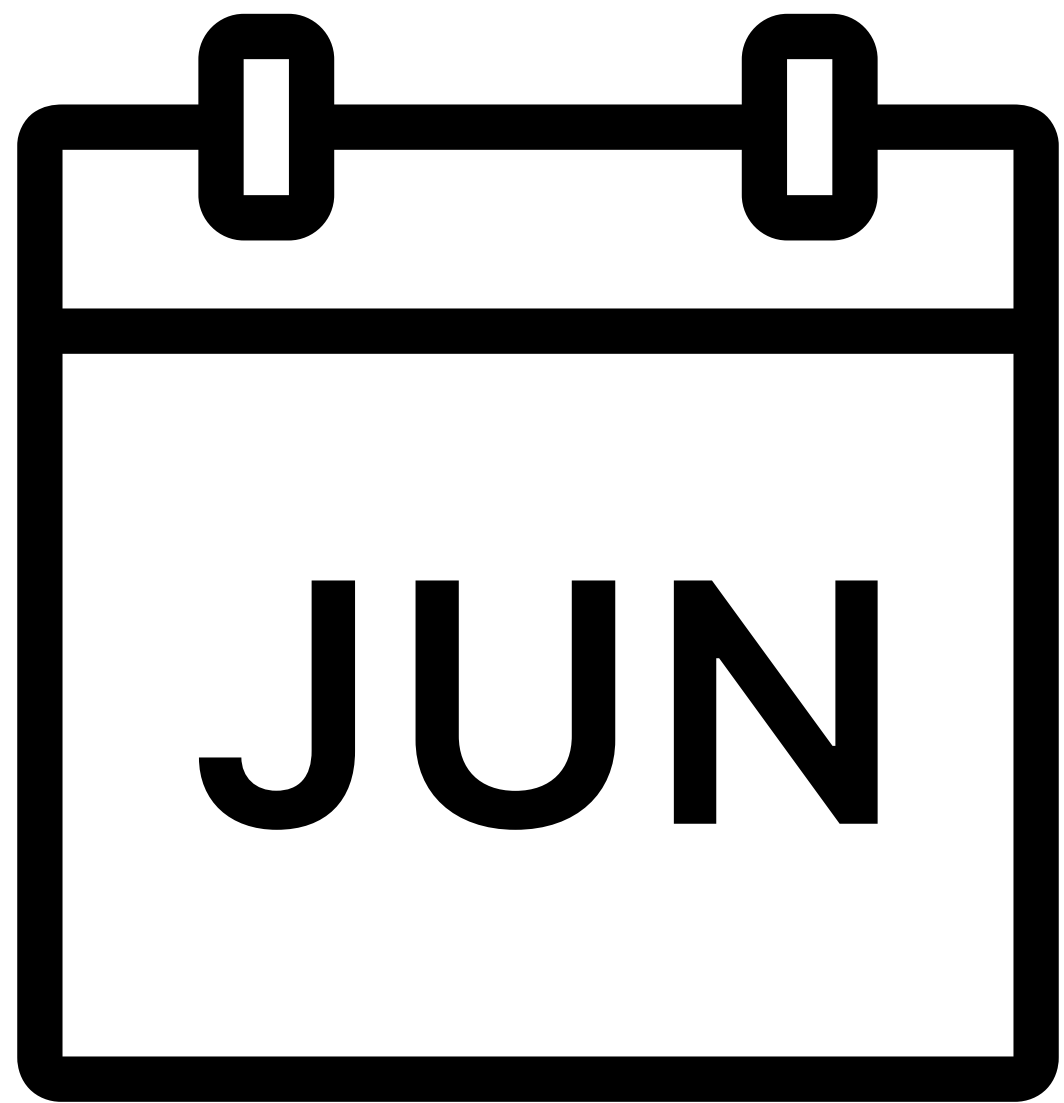


The meeting will take place in **Oulu, Finland**. You can read more about how to get to Oulu on **[this page](#)**.



It is **organised** by IETM, City of Oulu and Oulu2026, European Capital Of Culture. You can read more about each partner on **[this page](#)**.

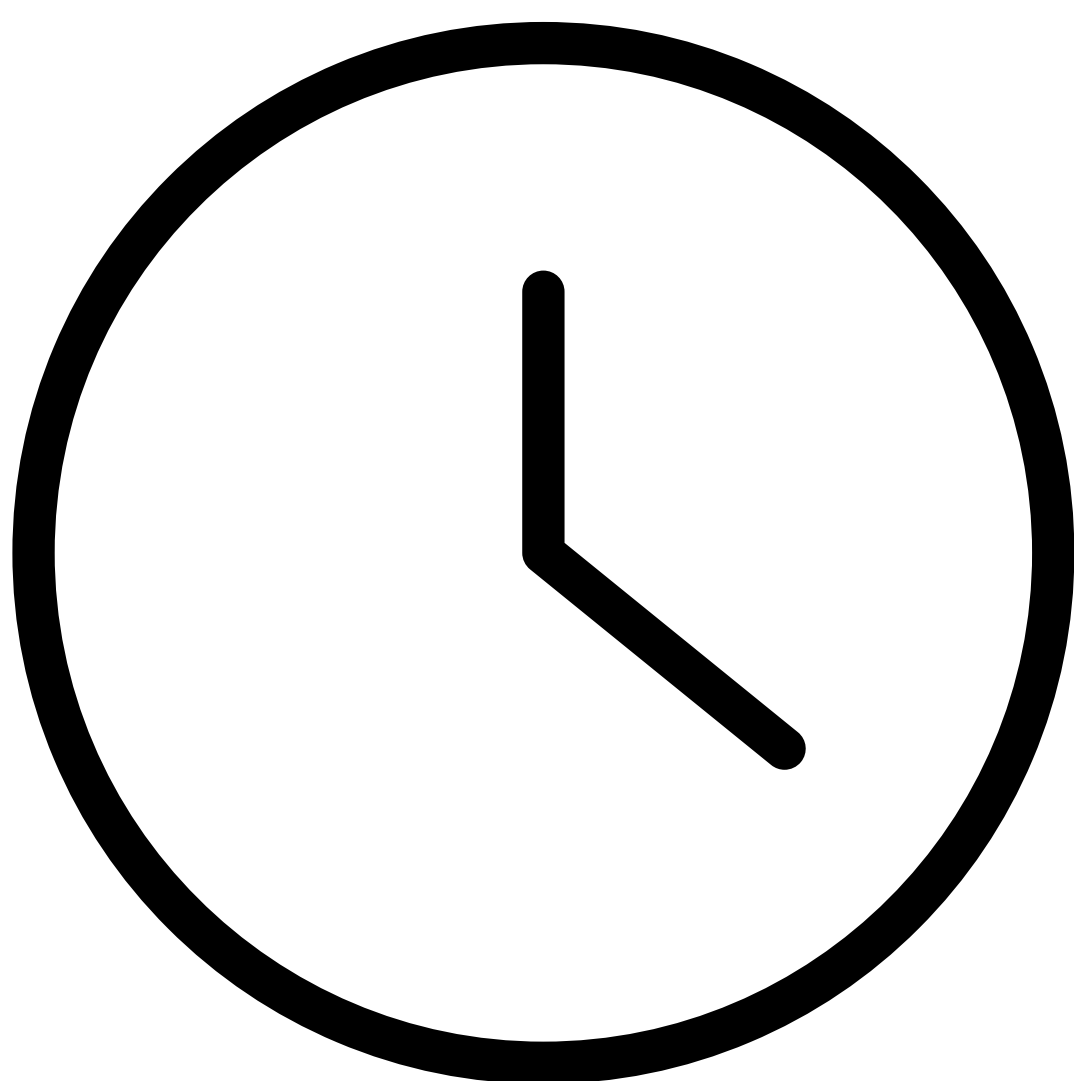
# When is the IETM Oulu Plenary Meeting?



The meeting starts on **Monday 15 June** and ends on **Thursday 18 June**.



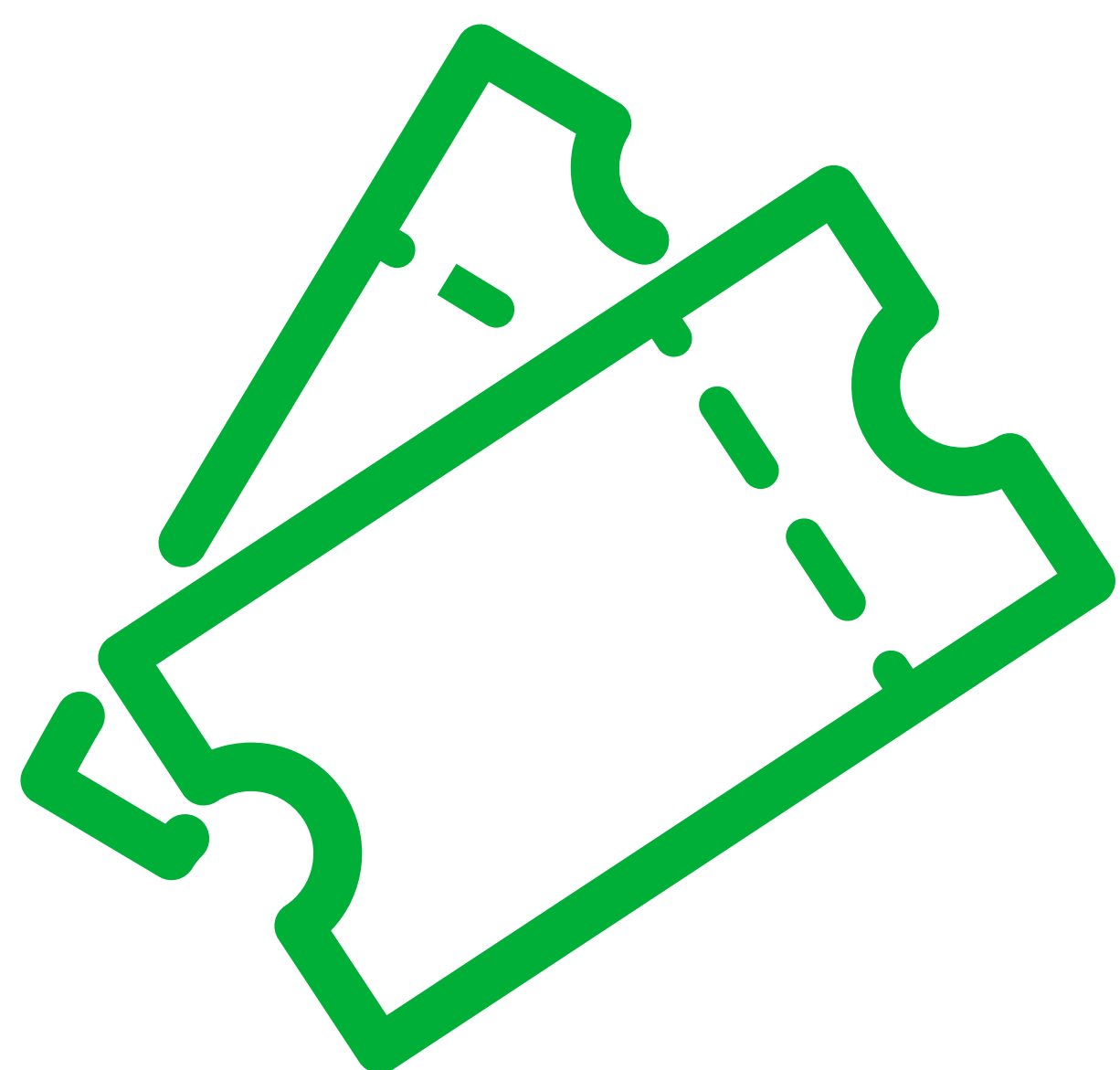
There is also a pre-trip to Espoo taking place on **Saturday 13 June to Sunday 14 June**. If you are registered for this trip, then you can find all information [here](#).



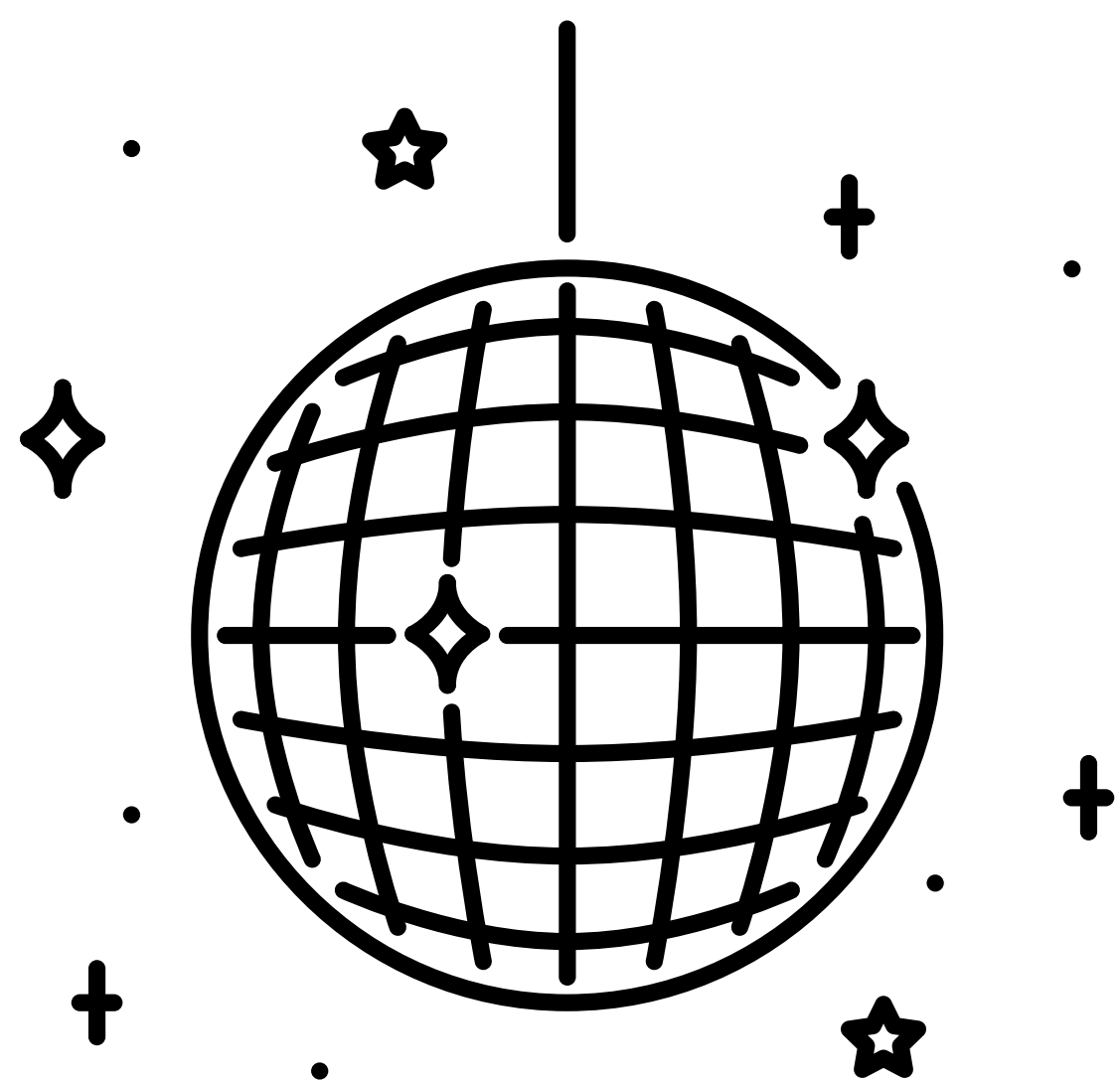
On the first day of the Plenary, the first activities start at **10:30** and end at **18:15**.

On day two, they start at **09:00** and end at **18:15**.

On day three, they start at **09:00** and end at **17:00**.



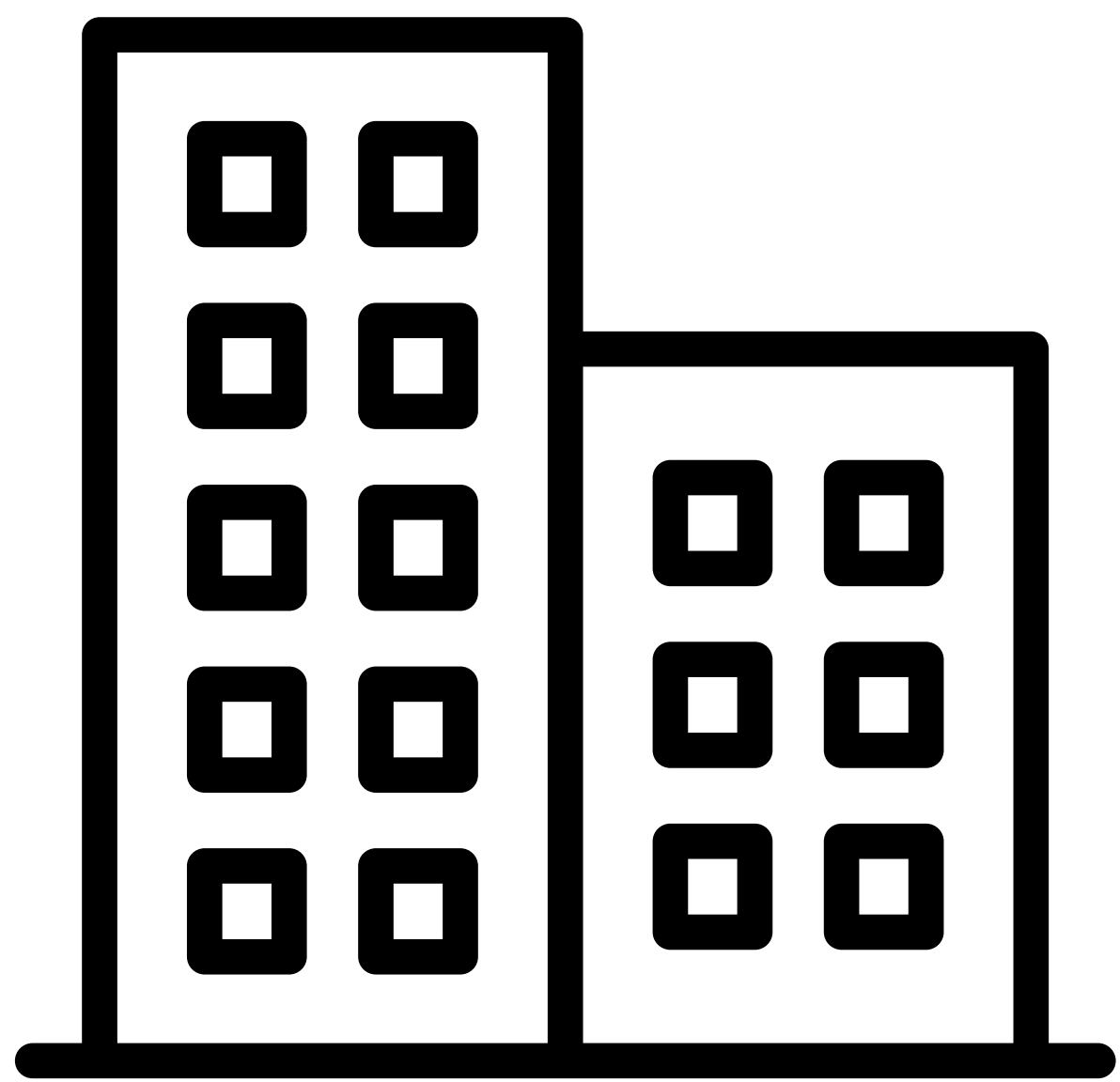
In the evening, you can attend performances and shows happening around Oulu. The shows are indicated in the **online programme** in **green** with a **ticket symbol** next to them.



There will also be **late night meeting points** where you can meet up with participants for drinks and a chat, as well as a **closing party** on the last night.

There may be **loud music** and **flashing lights**.

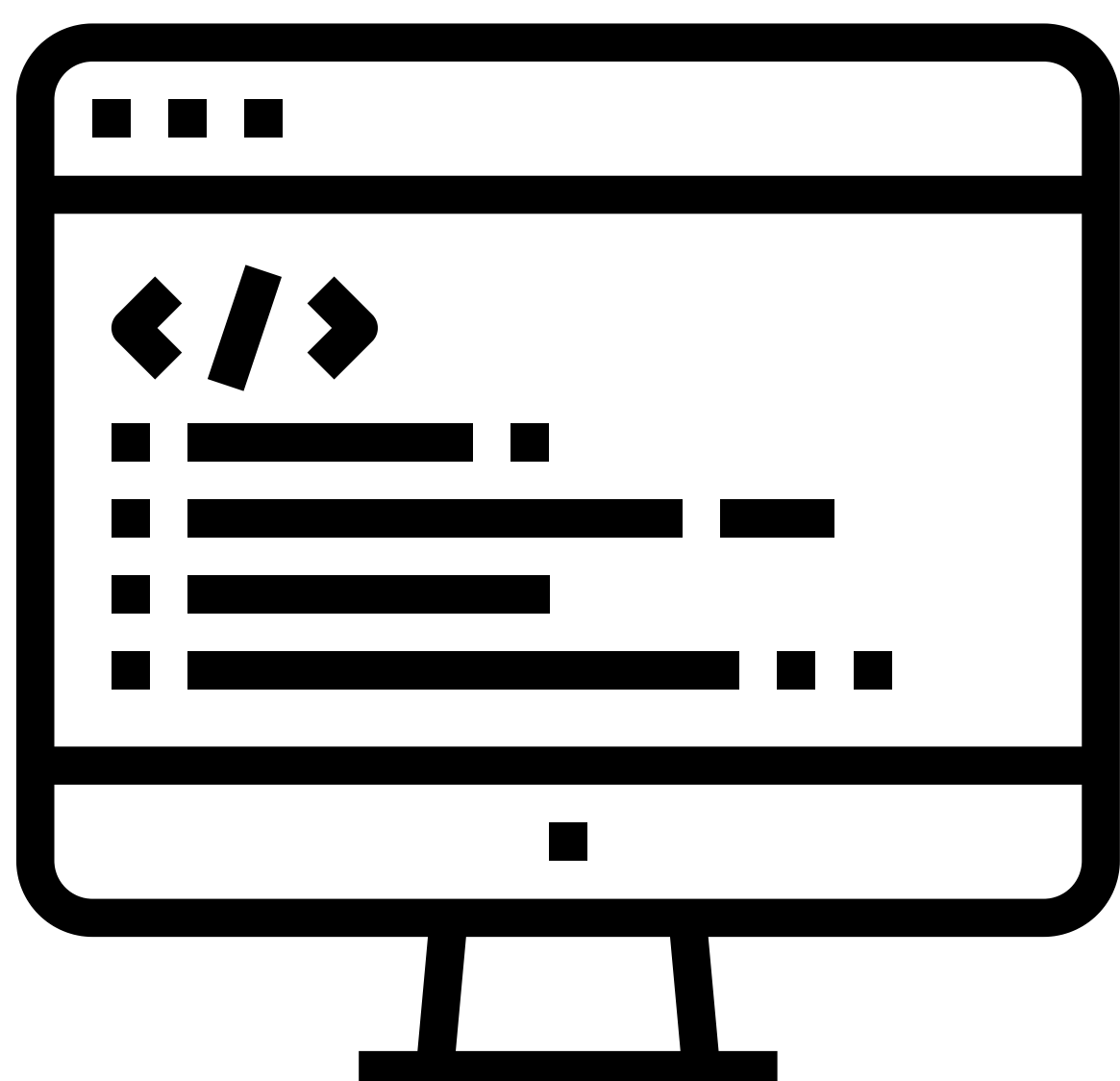
# The venues



The Plenary will take place at three main venues - Oulu Theatre, Valve and Oulu Library. You can find all information about them, where they are, and how to get there on [this page](#).

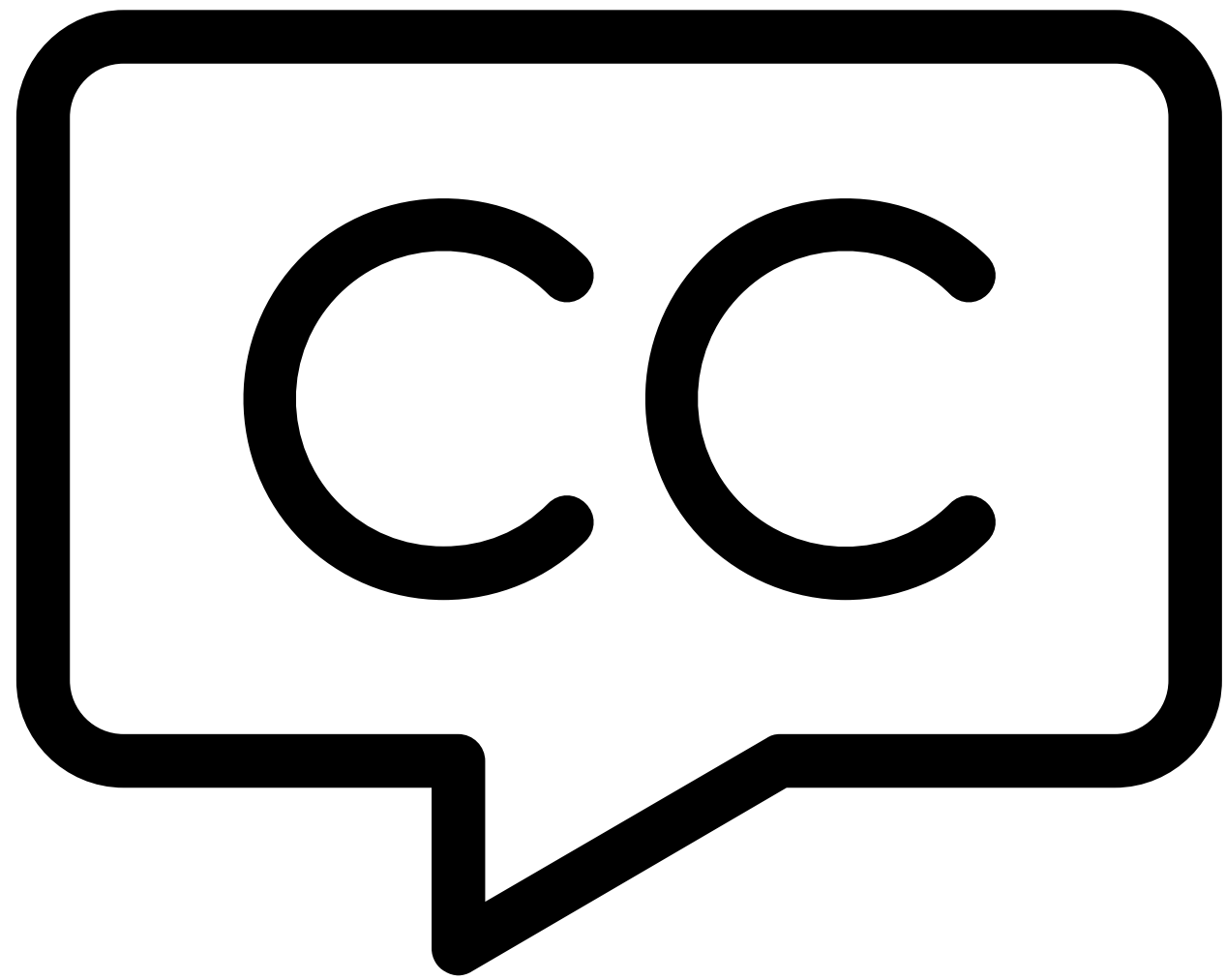


You can find a map with icons to recognise locations [here](#).



You can download an accessible version of the programme [here](#).

# Access Needs at the Plenary Meeting

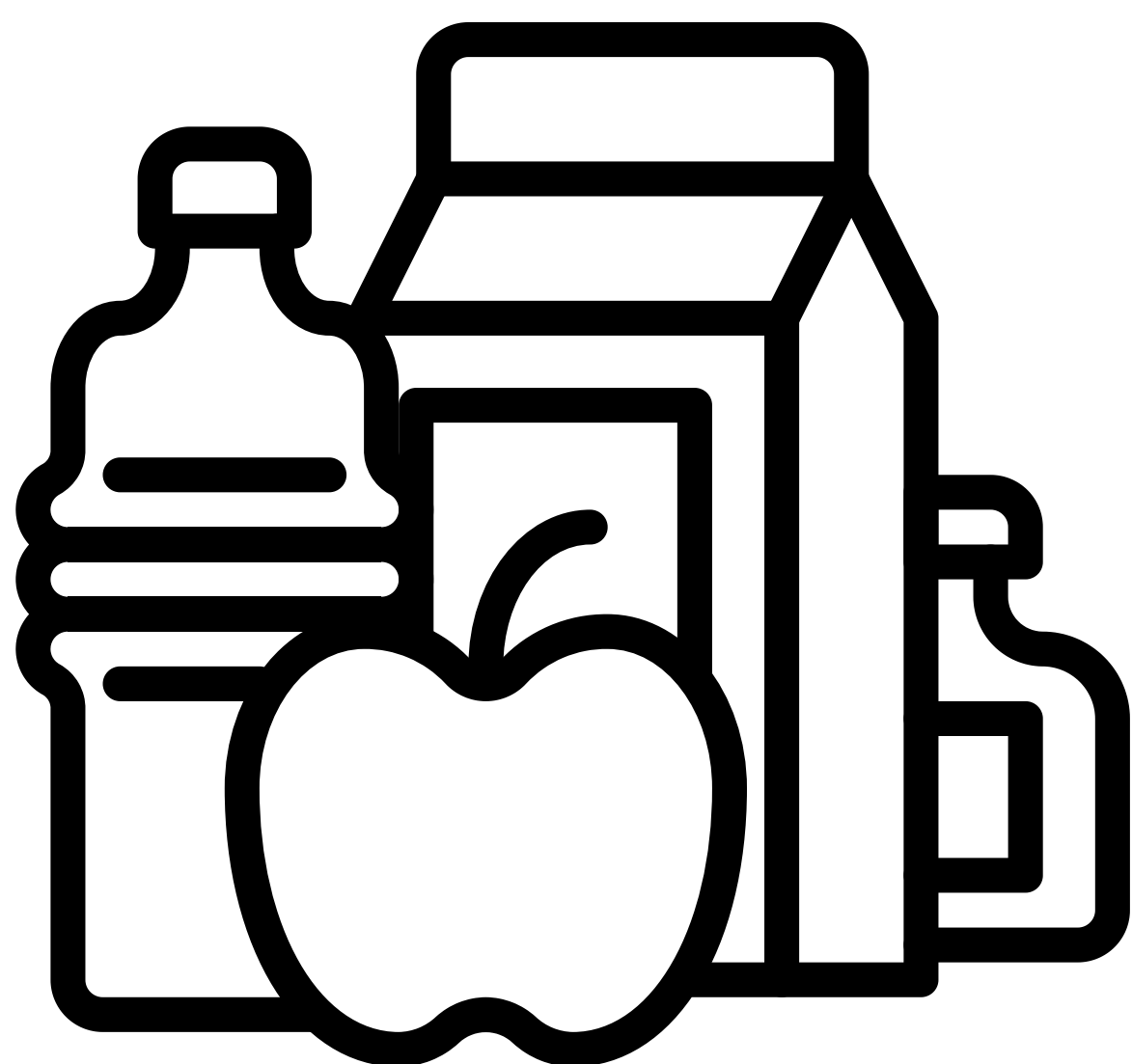


**Captions** are available for most of the activities and are indicated in the online programme.

You can access them by scanning a **QR code** that we will provide for you.



A quiet room is available for when you need a moment to yourself.

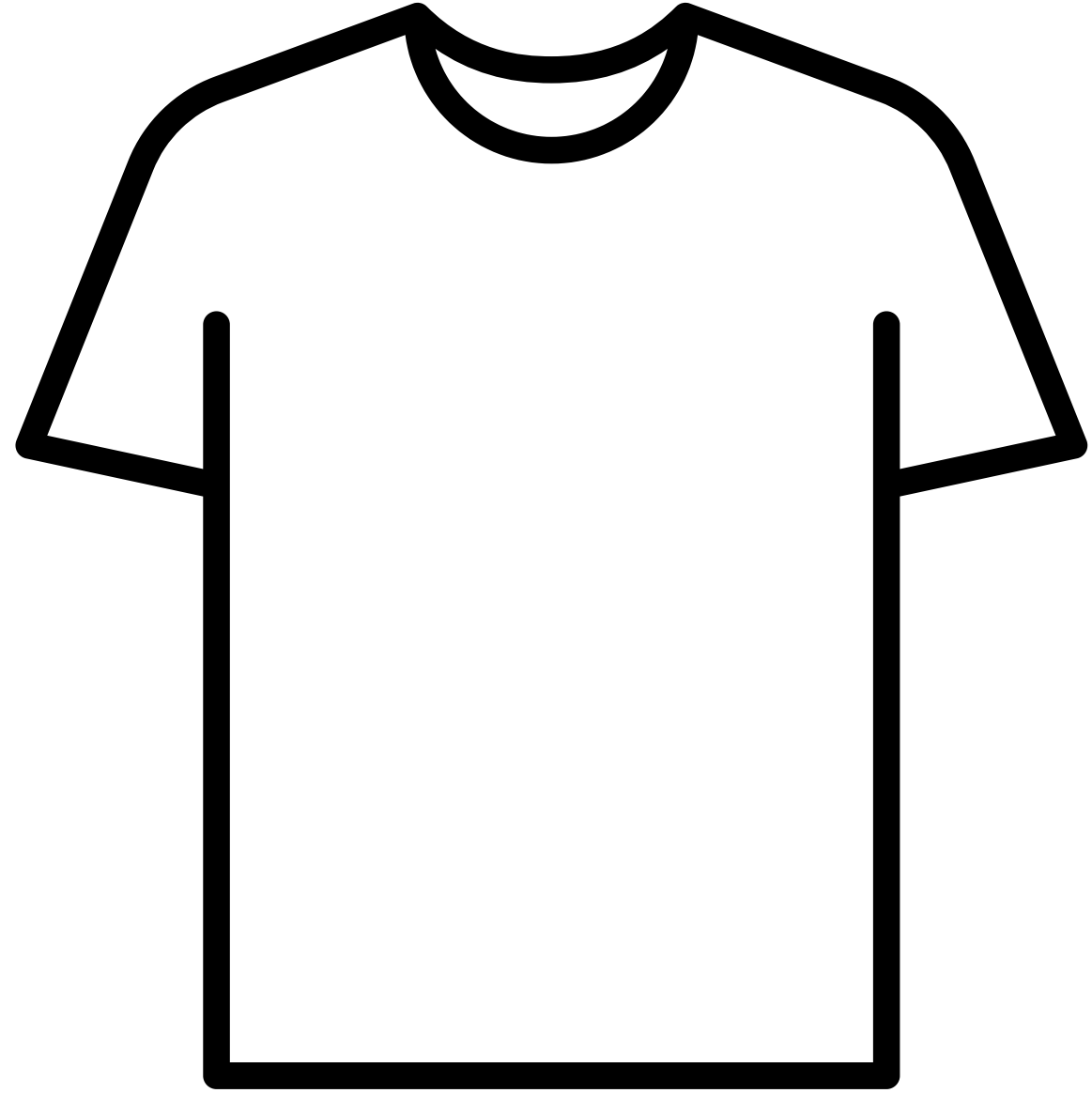


We have done our best to take note of all **dietary requirements**, but please speak to a member of the IETM team if you are unsure about something.



All rooms have step free access and there are accessible toilets.

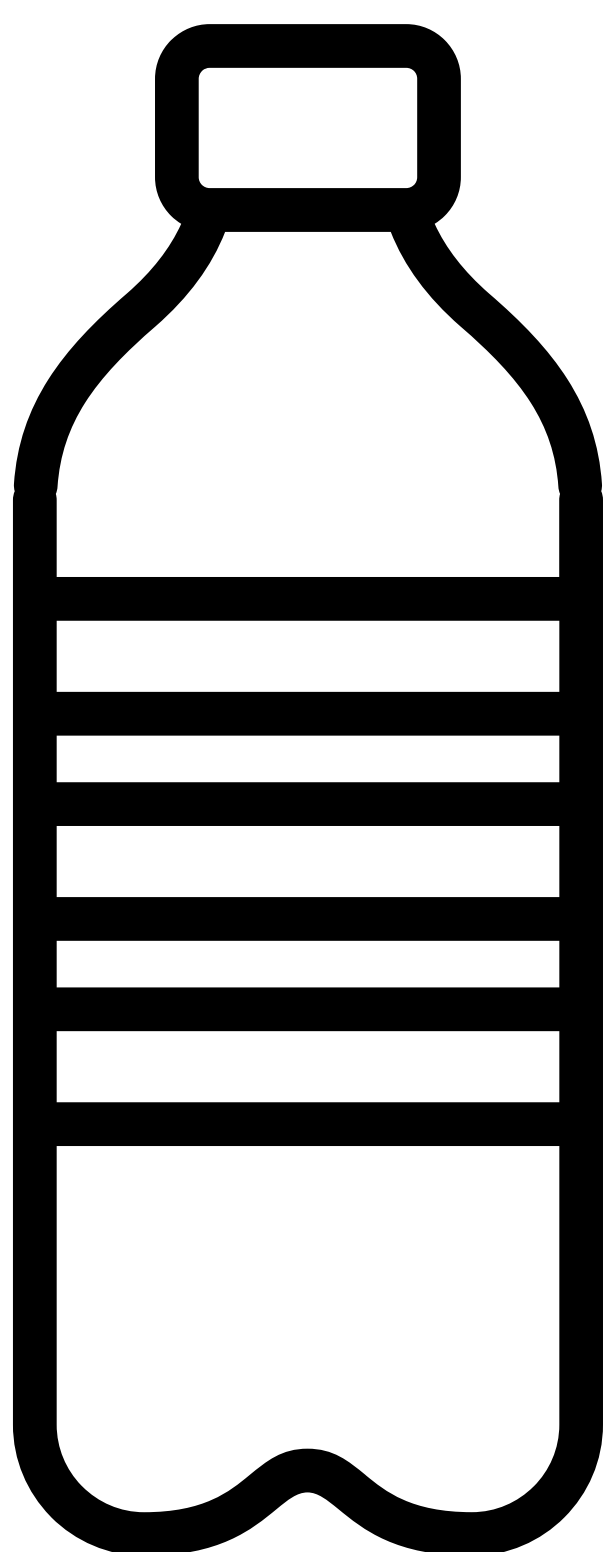
# What should you bring?



**Clothing** and **shoes** you feel you can move around **comfortably** in. Some sessions take place outdoors, so make sure you dress appropriately.



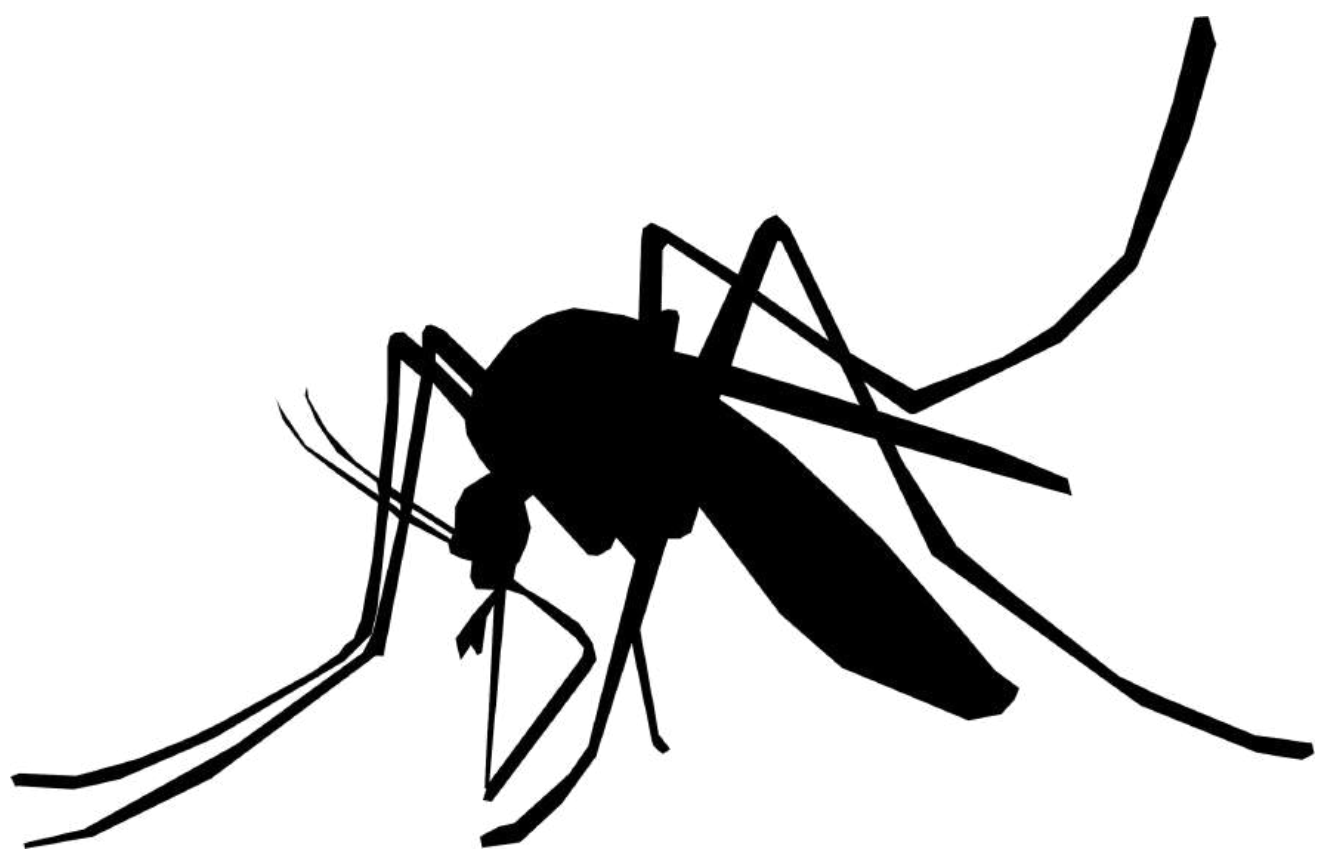
A **laptop** or **notepad** and **pen** to take notes.



A **reusable water bottle** or **portable travel mug**.



As the meeting takes place around Midsummer, you can expect up to twenty two hours of daylight in Oulu! Be sure to bring an **eyemask** with you to get a good night's sleep.



As Oulu is near the ocean, there will be a lot of mosquitos this time of year. We therefore recommend bringing bug spray with you.

# Look out for the IETM team!



**Asa**  
Secretary General



**Lottie**  
Communications and  
Events Manager

**Roisin**  
Production Manager

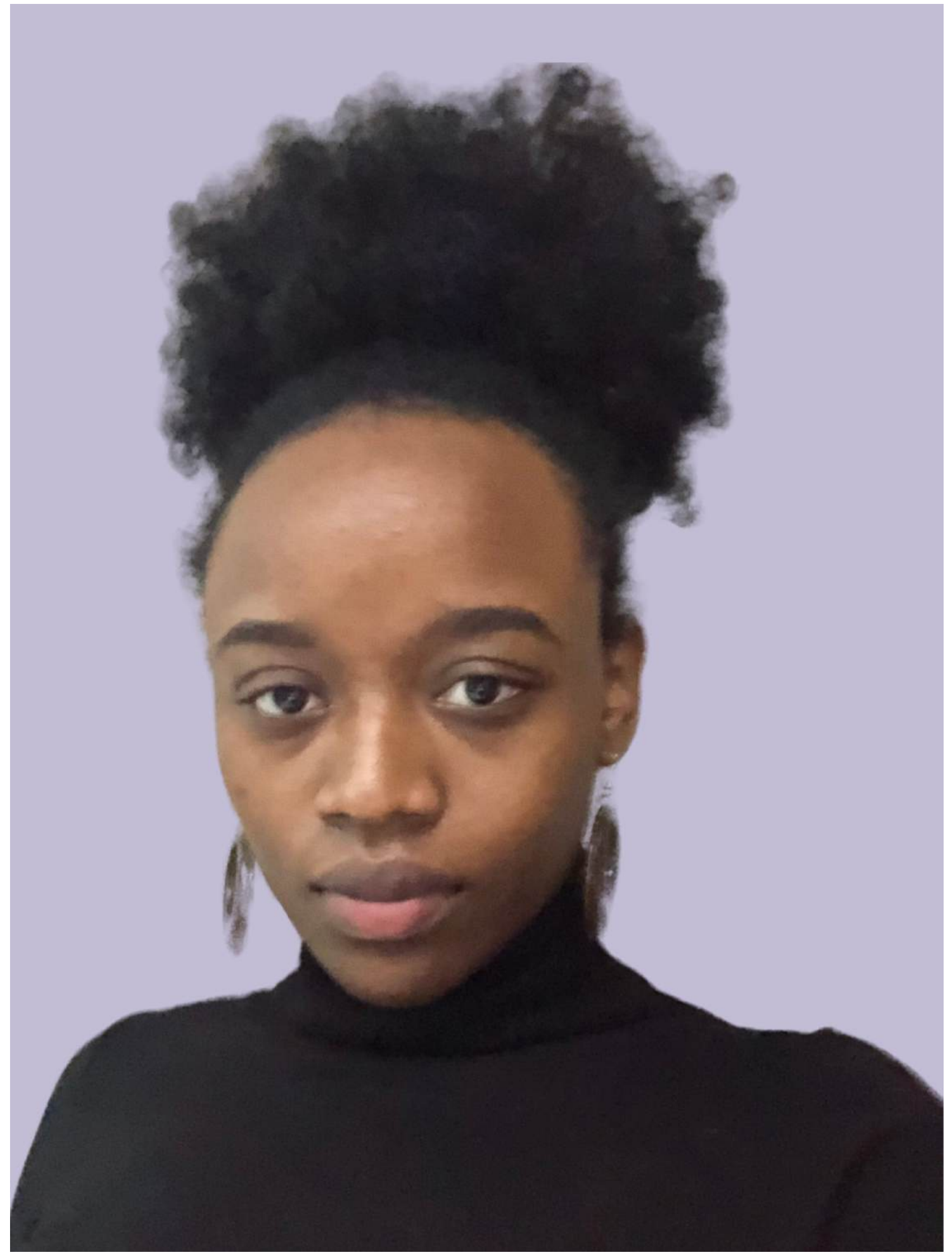
**Lana**  
Production Assistant



# Look out for the IETM team!



**Margherita**  
Membership Manager



**Giselle**  
Communications & Project  
Officer



**Ilaria**  
Membership Officer



**Abdallah**  
Administrator